

Zoning Districts

- HL Highlands District
- LT Lamington District
- FP Farmland Preservation District
- PM Piedmont District
- R-1.5 R-1.5 Residential District
- TH-V Townhouse Village District
- SO South Oldwick Residential District
- VR Village Residential District
- VR-1 Village Residential - 1 District
- VB Village Business District
- RO/MXD Research Office/ Mixed Use District
- VO Village Office District
- MINE Mining District
- H Historic District Overlay

Legend

- Municipal Boundary
- Lots
- Highlands Preservation Area
- Highlands Planning Area

0 1,875 3,750
Feet
1 inch = 3,750 feet



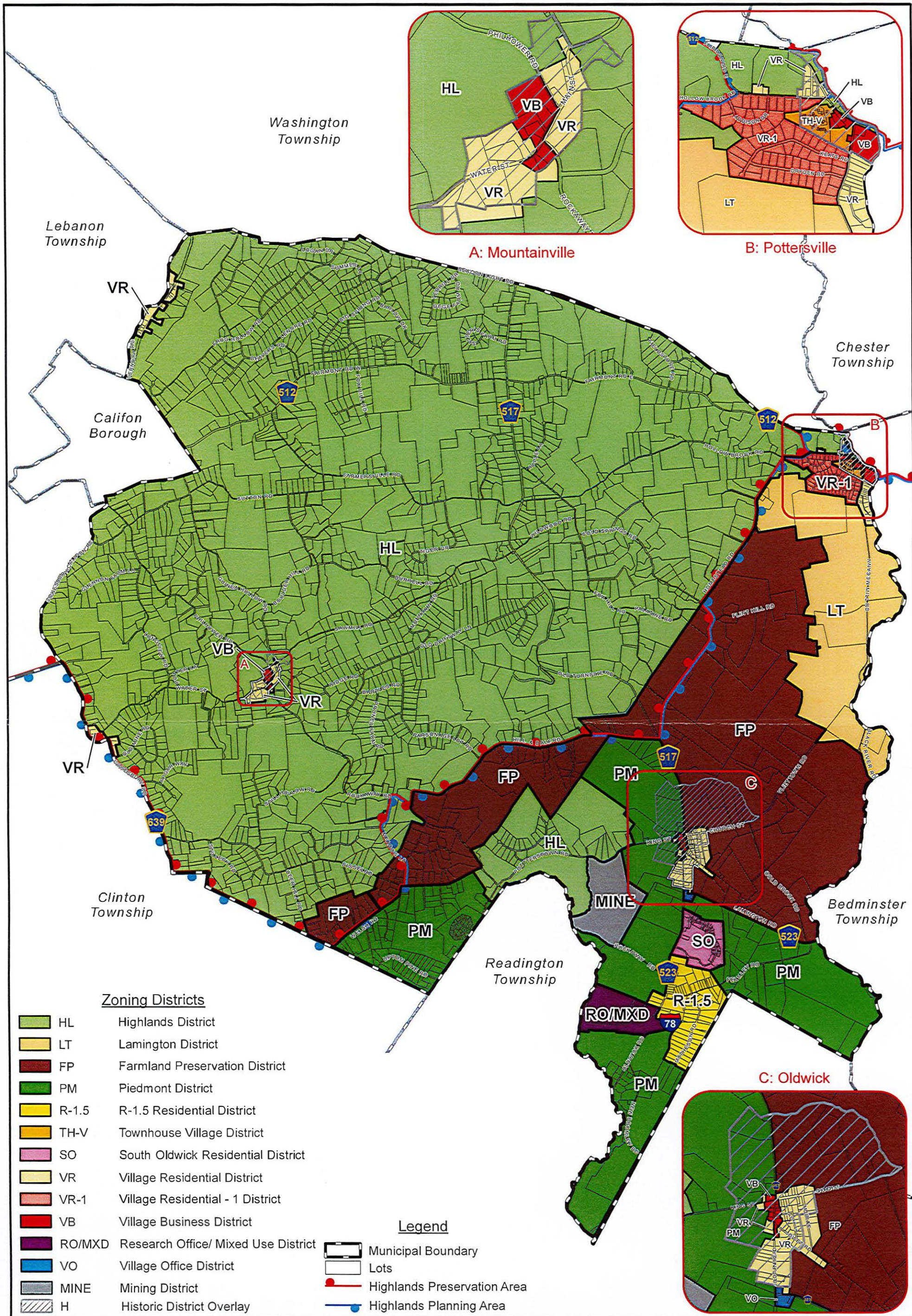
WORKING ZONING MAP

Township of Tewksbury
Hunterdon County, New Jersey



JANUARY 2019

This map was developed using Zoning Data prepared by Banisch Associates, Inc (2013), NJDEP, NJDOT, Hunterdon County and NJ Highlands Council GIS data. This secondary product has not been verified and is not County or State authorized.



0 1,875 3,750
Feet
1 inch = 3,750 feet

N

This map was developed using Zoning Data prepared by Banisch Associates, Inc (2013), NJDEP, NJDOT, Hunterdon County and NJ Highlands Council GIS data. This secondary product has not been verified and is not County or State authorized.

WORKING ZONING MAP

Township of Tewksbury
Hunterdon County, New Jersey

MASER
CONSULTING P.A.

JANUARY 2019

\\hqfas1\Survey\GIS\PROJECTS\Municipal\Q-T\TBT\TBT0281\90114apb_DRAFT_Working_Zoning_Map.mxd